

## FFP Tech Tip: Working Set

The main FFP dialogue is the **Working Set** window. It acts as a filter on the data in your database. The database name is shown with complete path so you know where it is filed.

Database Name: C:\FFP\mdb\S491ex.mdb  
Description: Default Database Structure for FireFamily Plus

Active Working Set Definition

SIG/Station: 210509 - ELY, MN

Data Years (1973 - 1998): 1987 thru 1998

Enable Auxiliary Year Overlays

Annual Filter (Time of Year):  
Month: April thru October  
Day: 1 thru 31

Analysis Period Length (Days): 1

Fire Associations

SIG/Station Metadata:

StationID	Name	NFDRS Fuel Model	Use 88 Model	Slope Class	Climate Class	Gre
210509	ELY, MN	G - Short Needle Pine (heavy deac	<input type="checkbox"/>	1	3	05-1

The most important part of the Working Set is the **Active Working Set Definition**

Database Name: C:\FFP\mdb\S491ex.mdb  
Description: Default Database Structure for FireFamily Plus

Active Working Set Definition

SIG/Station: 210509 - ELY, MN

Data Years (1973 - 1998): 1987 thru 1998

Enable Auxiliary Year Overlays

Annual Filter (Time of Year):  
Month: April thru October  
Day: 1 thru 31

Analysis Period Length (Days): 1

Fire Associations

SIG/Station Metadata:

StationID	Name	NFDRS Fuel Model	Use 88 Model	Slope Class	Climate Class	Gre
210509	ELY, MN	G - Short Needle Pine (heavy deac	<input type="checkbox"/>	1	3	05-1

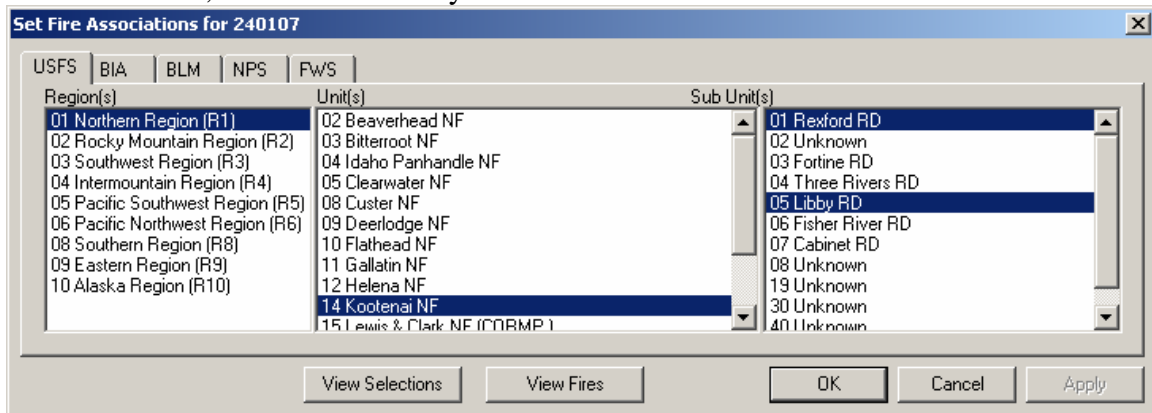
This is where **SIG/Stations** are selected, along with the **Data Years** and the **Annual Filter** that allows you to select the Month/Day range within the data years. The Data Years above the input box show the available years, the years in the boxes define the used in working set analysis.

The **Enable Auxiliary Years Overlays** check box -- Checking Enable Auxiliary Years Overlays causes FireFamily Plus to analyze all years of data, not just those in the Data Years. Auxiliary year data are *not included* in the statistical computations and display (minimum, maximum, average) but are available to be overlaid on a climatology graph.

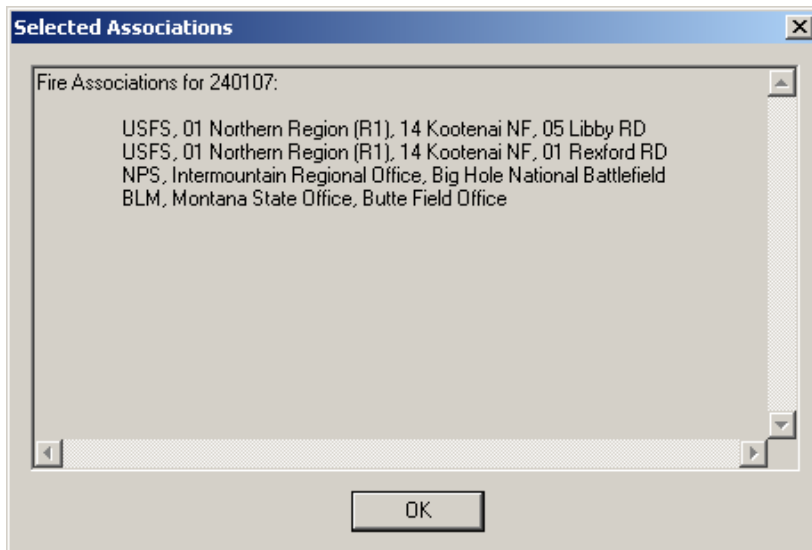
**Analysis Period Length (Days)** defines the number of days the program uses for grouping weather observations. These are bins (3-day, 7-day, etc.) rather than moving averages.

The **Fire Associations** button opens the Fire Associations screen. This screen is used to associate fires with the current SIG or station.

The Set Fire Associations dialog will open. In the Region column, at least one region must be highlighted for at least one agency. In the unit and subunit columns, if a unit is marked, only marked rows are selected. If no rows are marked, all rows associated with the parent region or unit are included. Below shows selection of USFS, Kootenai National Forest, Rexford and Libby Districts.



You can view your complete selection criteria (all agencies) by selecting the “View Selections” button.



**S491ex.mdb - Working Set**

Database Name: C:\FFP\mdb\S491ex.mdb

Description: Default Database Structure for FireFamily Plus

Active Working Set Definition

SIG/Station: 210509 - ELY, MN

Data Years (1973 - 1998): 1987 thru 1998

Enable Auxiliary Year Overlays

Analysis Period Length (Days): 1

Annual Filter (Time of Year)

Month: April thru October

Day: 1 thru 31

Fire Associations

SIG/Station Metadata:

StationID	Name	NFDRS Fuel Model	Use 88 Model	Slope Class	Climate Class	Greg
210509	ELY, MN	G - Short Needle Pine (heavy deac	<input type="checkbox"/>	1	3	05-1

**SIG/Station Metadata** is the final part of the Working Set screen. Each line shows most information for the station(s) selected in the Active Working Set Definition. You may edit information (e.g. NFDRS Fuel Model) in the Metadata dialog box.