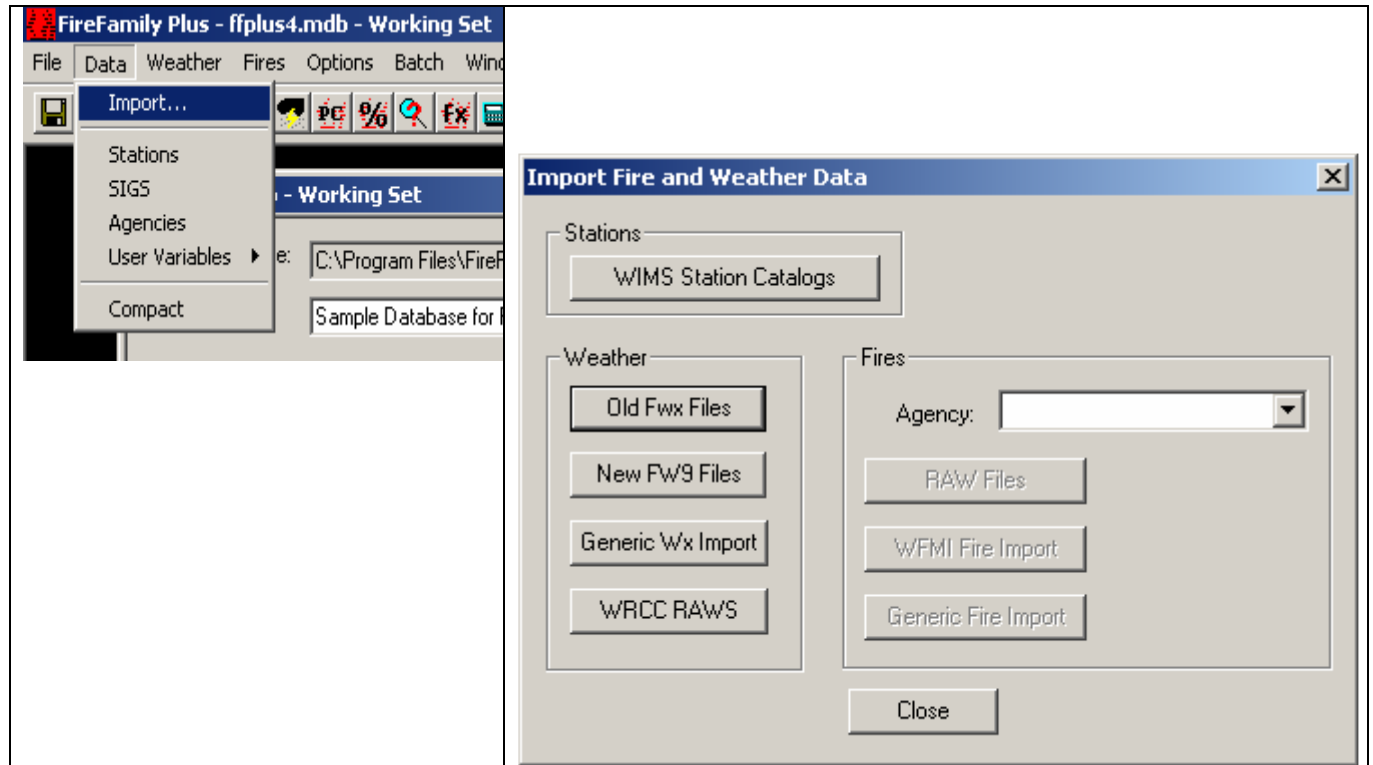


FFP Tech Tip: Importing Data

To import data, click on Data-> Import. The Import Fire and Weather Data box will open.



To import FWX files click on the Old Fwx Files button.

To import .FW9 files, click on the New FW9 Files button.

To import WIMS Station Catalogs, click on the WIMS Station Catalog button.

To import Western Region Climate Center Hourly RAWs data, click on the WRCC RAWs button. (See FFP4 Help Topic “Importing Data.”)

To import Fires, click on the down arrow by Agency, select the desired agency.