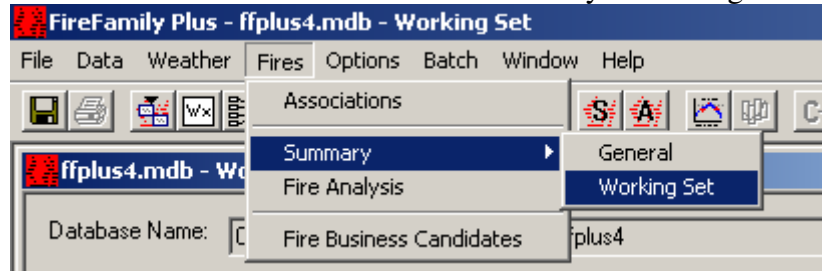


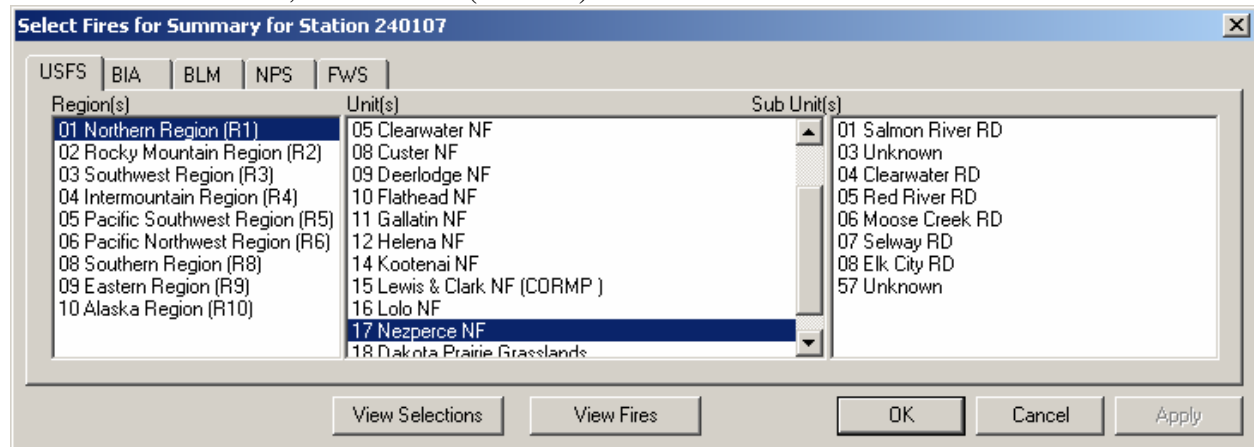
FFP Tech Tip: Fire Summary

Verify working set for years and annual filter.

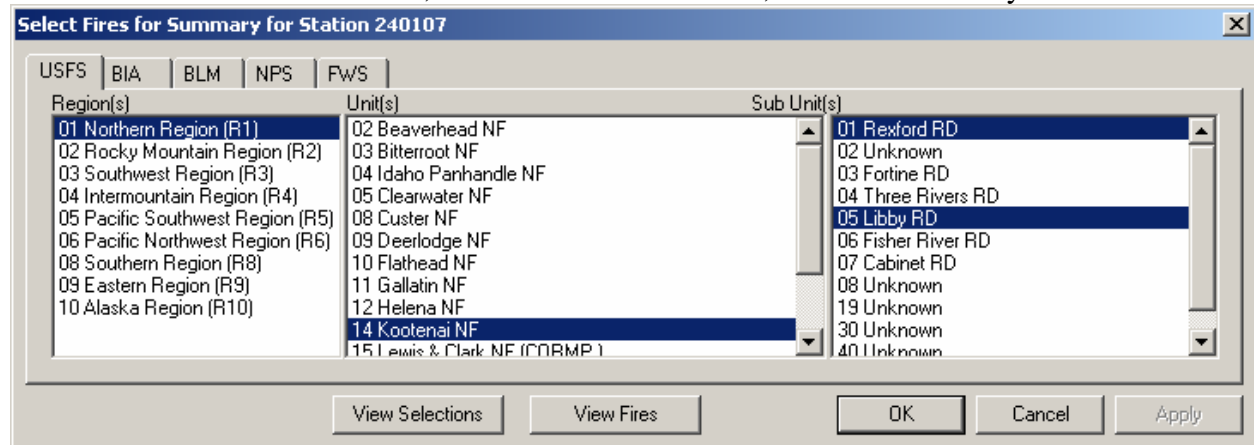
From the main tool bar click Fires->Summary->Working Set



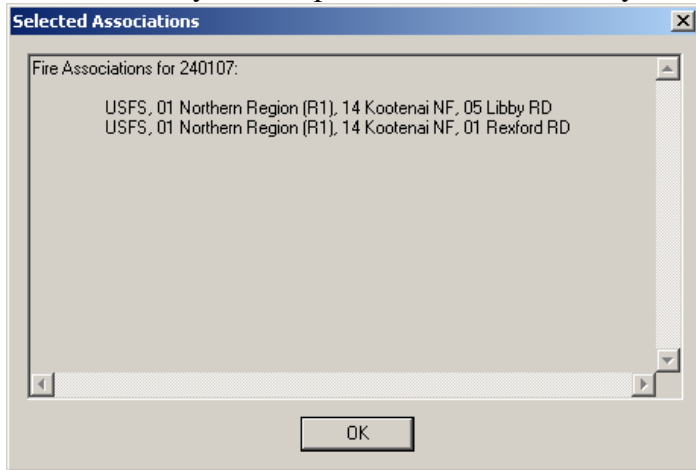
The Select Fires for Summary screen will open. In the Region column, at least one region must be highlighted for at least one agency. In the unit and subunit columns, if a unit is marked, only marked rows are selected. If no rows are marked, all rows associated with the parent region or unit are included. For example, the below shows selection of USFS, Northern Region, Nez Perce National Forest, all sub units (districts).



Below shows selection of USFS, Kootenai National Forest, Rexford and Libby Districts.



You can view your complete selection criteria by selecting the “View Selections” button.

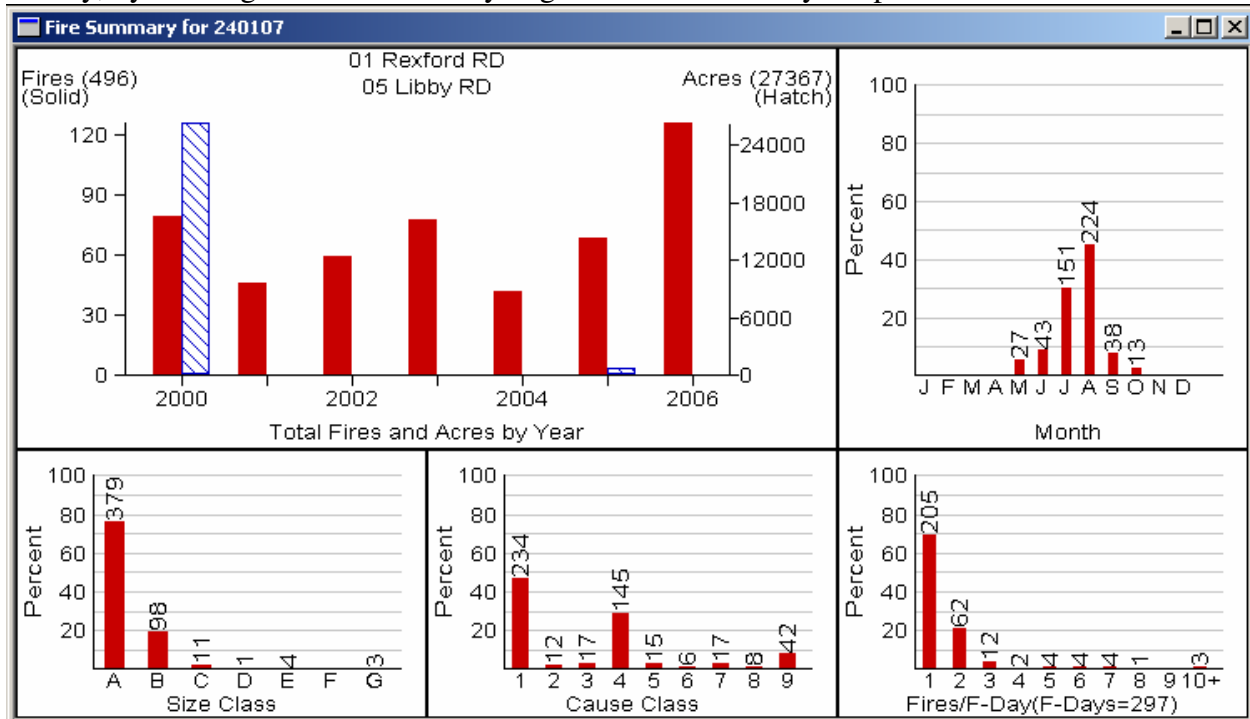


You can also view all the fires in your selection with the “View Fires” button.

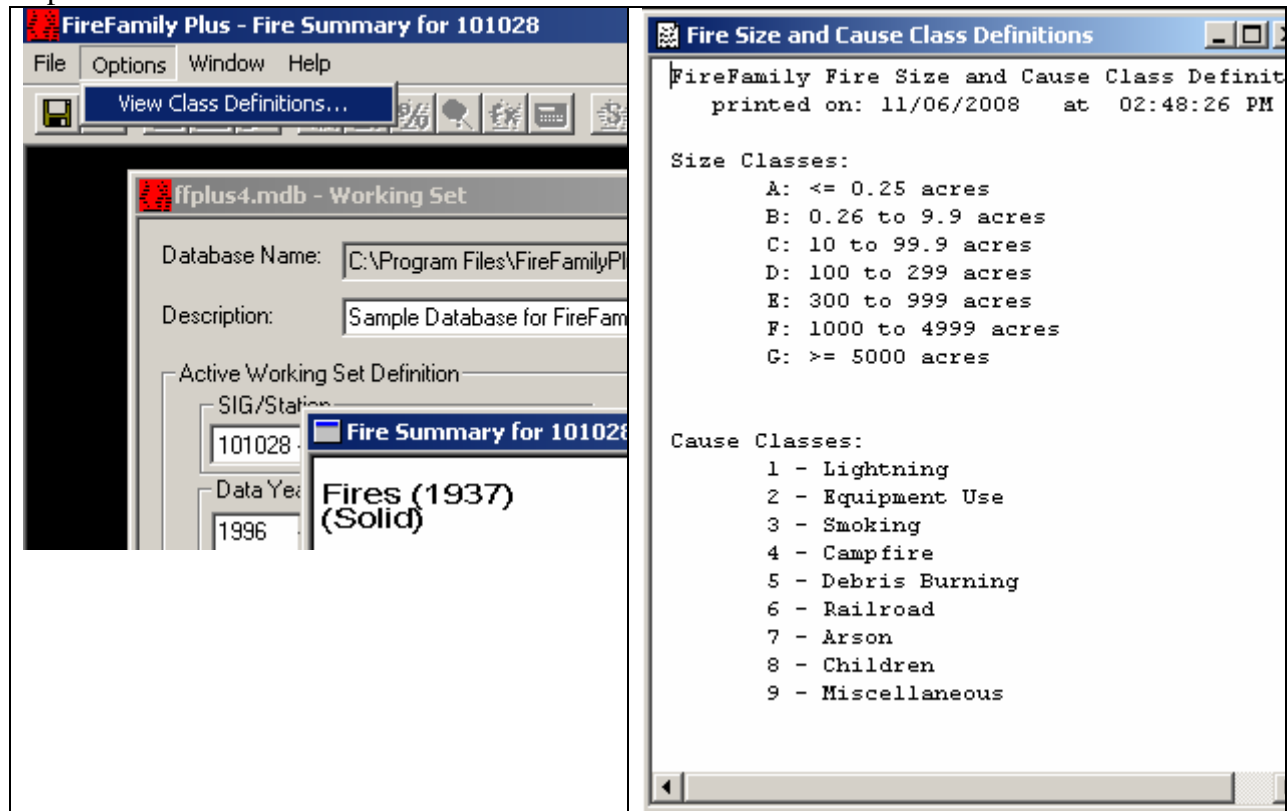
	Discovery	Acres	Cause	Fire Name	Fire Num	Lat. (Deg)	(min)	(sec)	Lon. (Deg)	(min)	(sec)	Agency	Region	Unit
1	05/01/00	0.2	5 Debris Bu	CARVEY ROAD FIRE	014	48	58	25	-115	5	30	USFS	01 Northern Region	14 Kootenai N
2	05/07/00	8.5	5 Debris Bu	THUNDER MOUNTAIN RAI	015	48	3	1	-115	25	10	USFS	01 Northern Region	14 Kootenai N
3	05/08/00	0.1	5 Debris Bu	GATEWAY ESTATES	016	48	59	30	-115	5	10	USFS	01 Northern Region	14 Kootenai N
4	05/20/00	0.1	4 Campfire	CEDAR CREEK	017	48	25	8	-115	30	8	USFS	01 Northern Region	14 Kootenai N
5	05/30/00	1.0	9 Miscellan	ANT HILL	021	48	47	30	-115	6	30	USFS	01 Northern Region	14 Kootenai N
6	06/28/00	0.1	1 Lightning	BLACKWELL FLATS	024	48	22	5	-115	15	8	USFS	01 Northern Region	14 Kootenai N
7	06/30/00	0.5	4 Campfire	TRACK	025	48	24	5	-115	35	0	USFS	01 Northern Region	14 Kootenai N

You can sort by any column (right click column header), or use the icon buttons to export, print, or delete records. You can export to a text file or to an ESRI shape file.

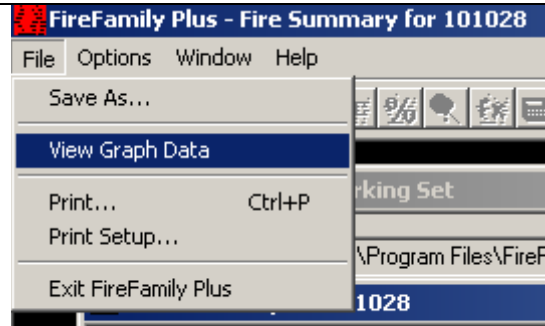
Finally, by clicking the “OK” button you get the Fire Summary Graph.



With focus on the Fire Summary graph window, you can review Size and Cause codes via Options->View Class Definitions



With focus on the Fire Summary graph window, you can review Graph Data via File->View Graph Data

 <p>FireFamily Plus - Fire Summary for 101028</p> <p>File Options Window Help</p> <p>Save As...</p> <p>View Graph Data</p> <p>Print... Ctrl+P</p> <p>Print Setup...</p> <p>Exit FireFamily Plus</p> <p>Working Set</p> <p>\Program Files\FireF</p> <p>1028</p>	<p>Fire Associations:</p> <p>01 Rexford RD</p> <p>05 Libby RD</p> <table border="1"> <thead> <tr> <th>Year</th> <th>Fires</th> <th>Acres</th> </tr> </thead> <tbody> <tr><td>2000</td><td>79</td><td>26142.4</td></tr> <tr><td>2001</td><td>46</td><td>158.0</td></tr> <tr><td>2002</td><td>59</td><td>10.2</td></tr> <tr><td>2003</td><td>77</td><td>59.2</td></tr> <tr><td>2004</td><td>42</td><td>18.7</td></tr> <tr><td>2005</td><td>68</td><td>844.2</td></tr> <tr><td>2006</td><td>125</td><td>134.7</td></tr> <tr><td>Total</td><td>496</td><td>27367.4</td></tr> </tbody> </table>	Year	Fires	Acres	2000	79	26142.4	2001	46	158.0	2002	59	10.2	2003	77	59.2	2004	42	18.7	2005	68	844.2	2006	125	134.7	Total	496	27367.4																																									
Year	Fires	Acres																																																																			
2000	79	26142.4																																																																			
2001	46	158.0																																																																			
2002	59	10.2																																																																			
2003	77	59.2																																																																			
2004	42	18.7																																																																			
2005	68	844.2																																																																			
2006	125	134.7																																																																			
Total	496	27367.4																																																																			
<p>Fires (1937)</p> <table border="1"> <thead> <tr> <th>Month</th> <th>Fires</th> <th>Lightning</th> <th>Human</th> </tr> </thead> <tbody> <tr><td>1</td><td>0</td><td>0</td><td>0</td></tr> <tr><td>2</td><td>0</td><td>0</td><td>0</td></tr> <tr><td>3</td><td>0</td><td>0</td><td>0</td></tr> <tr><td>4</td><td>0</td><td>0</td><td>0</td></tr> <tr><td>5</td><td>27</td><td>4</td><td>23</td></tr> <tr><td>6</td><td>43</td><td>18</td><td>25</td></tr> <tr><td>7</td><td>151</td><td>41</td><td>110</td></tr> <tr><td>8</td><td>224</td><td>157</td><td>67</td></tr> <tr><td>9</td><td>38</td><td>14</td><td>24</td></tr> <tr><td>10</td><td>13</td><td>0</td><td>13</td></tr> <tr><td>11</td><td>0</td><td>0</td><td>0</td></tr> <tr><td>12</td><td>0</td><td>0</td><td>0</td></tr> </tbody> </table> <p><i>(fires are tabulated by total/lightning/human)</i></p>	Month	Fires	Lightning	Human	1	0	0	0	2	0	0	0	3	0	0	0	4	0	0	0	5	27	4	23	6	43	18	25	7	151	41	110	8	224	157	67	9	38	14	24	10	13	0	13	11	0	0	0	12	0	0	0	<table border="1"> <thead> <tr> <th>Size Class</th> <th>Fires</th> </tr> </thead> <tbody> <tr><td>A</td><td>379</td></tr> <tr><td>B</td><td>98</td></tr> <tr><td>C</td><td>11</td></tr> <tr><td>D</td><td>1</td></tr> <tr><td>E</td><td>4</td></tr> <tr><td>F</td><td>0</td></tr> <tr><td>G</td><td>3</td></tr> </tbody> </table>	Size Class	Fires	A	379	B	98	C	11	D	1	E	4	F	0	G	3
Month	Fires	Lightning	Human																																																																		
1	0	0	0																																																																		
2	0	0	0																																																																		
3	0	0	0																																																																		
4	0	0	0																																																																		
5	27	4	23																																																																		
6	43	18	25																																																																		
7	151	41	110																																																																		
8	224	157	67																																																																		
9	38	14	24																																																																		
10	13	0	13																																																																		
11	0	0	0																																																																		
12	0	0	0																																																																		
Size Class	Fires																																																																				
A	379																																																																				
B	98																																																																				
C	11																																																																				
D	1																																																																				
E	4																																																																				
F	0																																																																				
G	3																																																																				
<table border="1"> <thead> <tr> <th>Cause Class</th> <th>Fires</th> </tr> </thead> <tbody> <tr><td>1</td><td>234</td></tr> <tr><td>2</td><td>12</td></tr> <tr><td>3</td><td>17</td></tr> <tr><td>4</td><td>145</td></tr> <tr><td>5</td><td>15</td></tr> <tr><td>6</td><td>6</td></tr> <tr><td>7</td><td>17</td></tr> <tr><td>8</td><td>8</td></tr> <tr><td>9</td><td>42</td></tr> </tbody> </table>	Cause Class	Fires	1	234	2	12	3	17	4	145	5	15	6	6	7	17	8	8	9	42	<table border="1"> <thead> <tr> <th>Num Fires</th> <th>Fires per Day (297 Fire-Days)</th> </tr> </thead> <tbody> <tr><td>1</td><td>205</td></tr> <tr><td>2</td><td>62</td></tr> <tr><td>3</td><td>12</td></tr> <tr><td>4</td><td>2</td></tr> <tr><td>5</td><td>4</td></tr> <tr><td>6</td><td>4</td></tr> <tr><td>7</td><td>4</td></tr> <tr><td>8</td><td>1</td></tr> <tr><td>9</td><td>0</td></tr> <tr><td>10+</td><td>3</td></tr> </tbody> </table>	Num Fires	Fires per Day (297 Fire-Days)	1	205	2	62	3	12	4	2	5	4	6	4	7	4	8	1	9	0	10+	3																										
Cause Class	Fires																																																																				
1	234																																																																				
2	12																																																																				
3	17																																																																				
4	145																																																																				
5	15																																																																				
6	6																																																																				
7	17																																																																				
8	8																																																																				
9	42																																																																				
Num Fires	Fires per Day (297 Fire-Days)																																																																				
1	205																																																																				
2	62																																																																				
3	12																																																																				
4	2																																																																				
5	4																																																																				
6	4																																																																				
7	4																																																																				
8	1																																																																				
9	0																																																																				
10+	3																																																																				
<p>Fire Size Percentiles Distribution</p> <table border="1"> <thead> <tr> <th>Percentile</th> <th>Size (Acres)</th> </tr> </thead> <tbody> <tr><td>69</td><td>0.1</td></tr> <tr><td>70</td><td>0.2</td></tr> <tr><td>75</td><td>0.2</td></tr> <tr><td>80</td><td>0.3</td></tr> <tr><td>85</td><td>0.5</td></tr> <tr><td>90</td><td>1.2</td></tr> <tr><td>91</td><td>1.5</td></tr> <tr><td>92</td><td>2.0</td></tr> <tr><td>93</td><td>3.0</td></tr> <tr><td>94</td><td>4.4</td></tr> <tr><td>95</td><td>5.0</td></tr> <tr><td>96</td><td>8.5</td></tr> <tr><td>97</td><td>12.0</td></tr> <tr><td>98</td><td>25.0</td></tr> <tr><td>99</td><td>785.0</td></tr> <tr><td>100</td><td>11115.0</td></tr> </tbody> </table>	Percentile	Size (Acres)	69	0.1	70	0.2	75	0.2	80	0.3	85	0.5	90	1.2	91	1.5	92	2.0	93	3.0	94	4.4	95	5.0	96	8.5	97	12.0	98	25.0	99	785.0	100	11115.0	<p><i>The Fire Size Percentiles Distribution (left panel) is not displayed graphically. It gives the fire size cumulative distribution for the current analysis set. Notice that the “low” percentiles are ignored and do not start until fire sizes of 0.1 acres. From whatever that point may be, the results are tabulated by 5 percentile increments to the 90th percentile, then by 1 percentile increments from the 90th to 100th (largest fire). This is a way to assist in determining values to use for “candidate” large-fire thresholds.</i></p>																																		
Percentile	Size (Acres)																																																																				
69	0.1																																																																				
70	0.2																																																																				
75	0.2																																																																				
80	0.3																																																																				
85	0.5																																																																				
90	1.2																																																																				
91	1.5																																																																				
92	2.0																																																																				
93	3.0																																																																				
94	4.4																																																																				
95	5.0																																																																				
96	8.5																																																																				
97	12.0																																																																				
98	25.0																																																																				
99	785.0																																																																				
100	11115.0																																																																				