

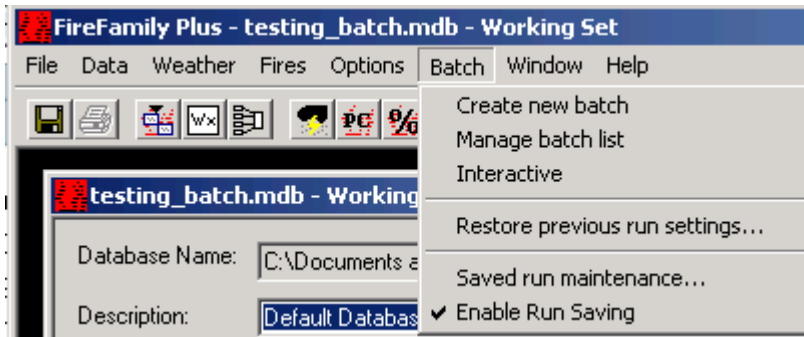
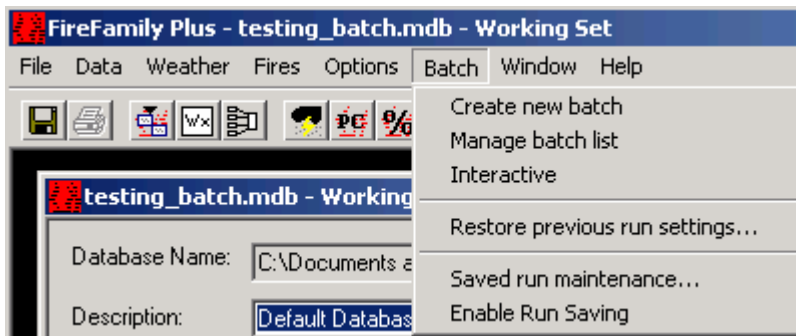
## FFP Tech Tip: Batch Functions

FireFamily Plus Version 4.0 introduces “batch” functionality which uses two terms, Run and Batch.

- A “Run” is when you generate a report with output in almost any FFP module.
- A “Batch” is a collection of one or more Runs.

To facilitate building batch jobs “Runs” can be saved in the active database. All the “Working Set” parameters in the run are saved. Saved runs can be used to 1) build batch jobs consisting of two or more saved runs, or 2) reload the run settings and Run FFP in the “classic” mode.

**Saving Runs.** Run Saving is toggled on or off by clicking on the “Enable Run Saving” line in the Batch menu.



**Maintaining Saved Runs.** Deleting of saved runs is done by selecting the Saved run maintenance option which brings a screen of options where you can also turn run saving on and off and select if you want to limit the number of runs saved in the database, and if so, by number of runs or most recent runs. You can also delete all runs (Purge all saved runs and batches) or selectively delete runs (Manual Run Maintenance).

Saved runs take up space in the database.

To maximize system performance and minimize disk usage, you may choose to periodically delete old or unused runs, or disable the saving of runs altogether.

Disable Run Saving      Run Saving will be disabled. No runs will be saved, no batch jobs will be able to be created from runs created when "Disable Run Saving" is selected.

Select the saved run maintenance scheme you wish to use.

Number of Records      A maximum of  runs will be saved in the database.  
When this limit has been reached, the oldest saved runs will be deleted as new ones are added.

Least Recently Used      A maximum of  runs will be saved in the database.  
When this limit has been reached, runs which have not been recently used will be deleted as new ones are added. Runs which have been accessed in the last 2 weeks will not be deleted.

None      No archiving scheme will be used.  
(This method is not recommended, as the database will continue to grow, and may slow down FireFamily Plus.)

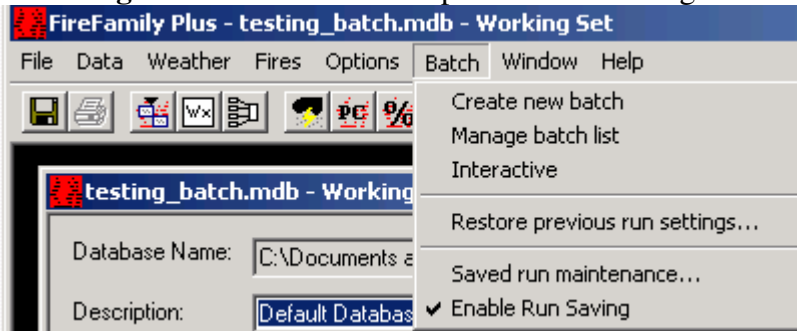
Purge all saved runs and batches...      Manual Run Maintenance      OK

Manual Run Maintenance is the most flexible and useful. Here you can see the basic run information, including if the run is used in any batches. You can delete all or selected runs.

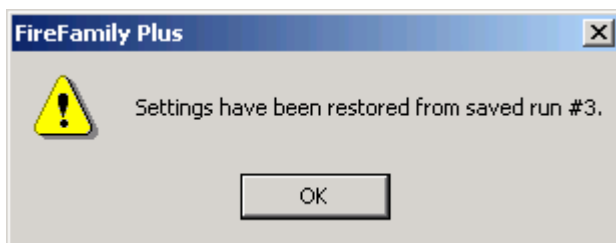
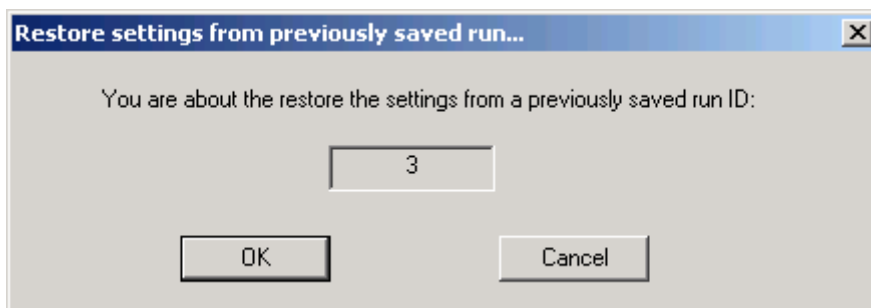
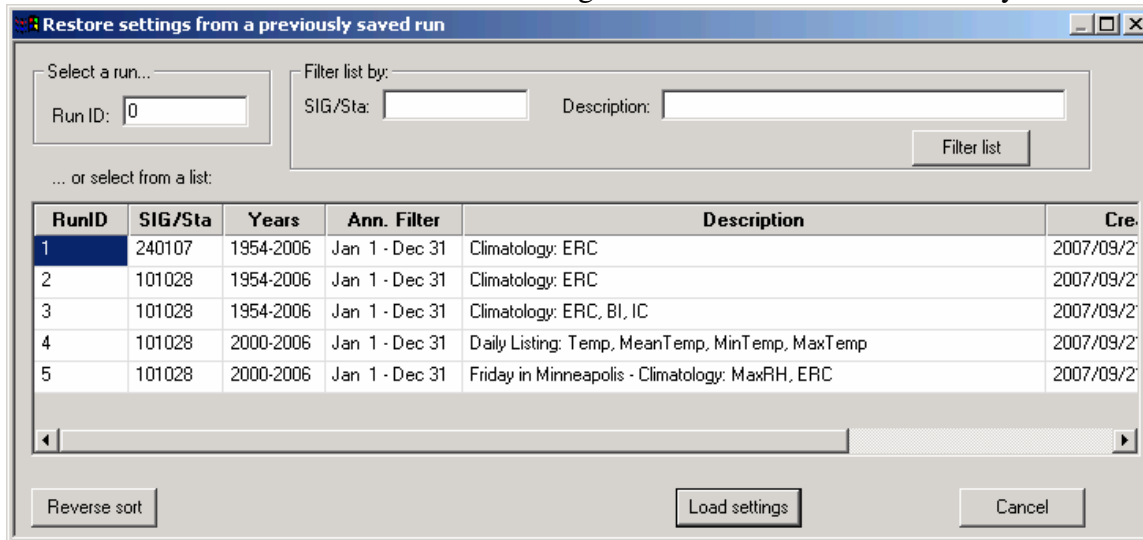
Existing Runs:      Sort By:

Delete	RunID	SIG/Sta	Years	Ann. Filter	Description	CreatedOn	LastRun	In Batches
<input checked="" type="checkbox"/>	1	240107	1954-2006	Jan 1 - Dec 31	Climatology: ERC	2007/09/21-12:29:04	2007/09/27-14:55:39	3 (1,2,3)
<input type="checkbox"/>	2	101028	1954-2006	Jan 1 - Dec 31	Climatology: ERC	2007/09/21-12:29:51	2007/09/21-12:48:05	1 (1)
<input type="checkbox"/>	3	101028	1954-2006	Jan 1 - Dec 31	Climatology: ERC, BI, IC	2007/09/21-12:34:38	2007/09/27-14:55:39	1 (2)
<input type="checkbox"/>	4	101028	2000-2006	Jan 1 - Dec 31	Daily Listing: Temp, MeanTemp, MinTe	2007/09/21-12:39:00	2007/09/21-12:45:28	1 (3)
<input type="checkbox"/>	5	101028	2000-2006	Jan 1 - Dec 31	Friday in Minneapolis - Climatology: Me	2007/09/21-12:49:02	2007/09/21-12:49:02	0

**Restoring Runs.** Select “Restore previous run settings...” from the Batch menu

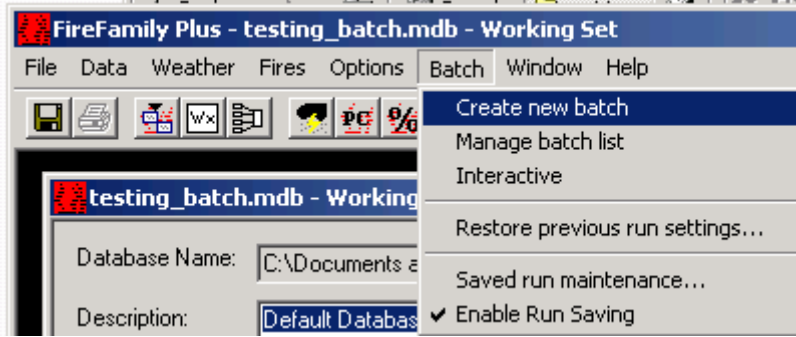


Select a Run ID and click on the Load Settings button and confirm or cancel your selections.

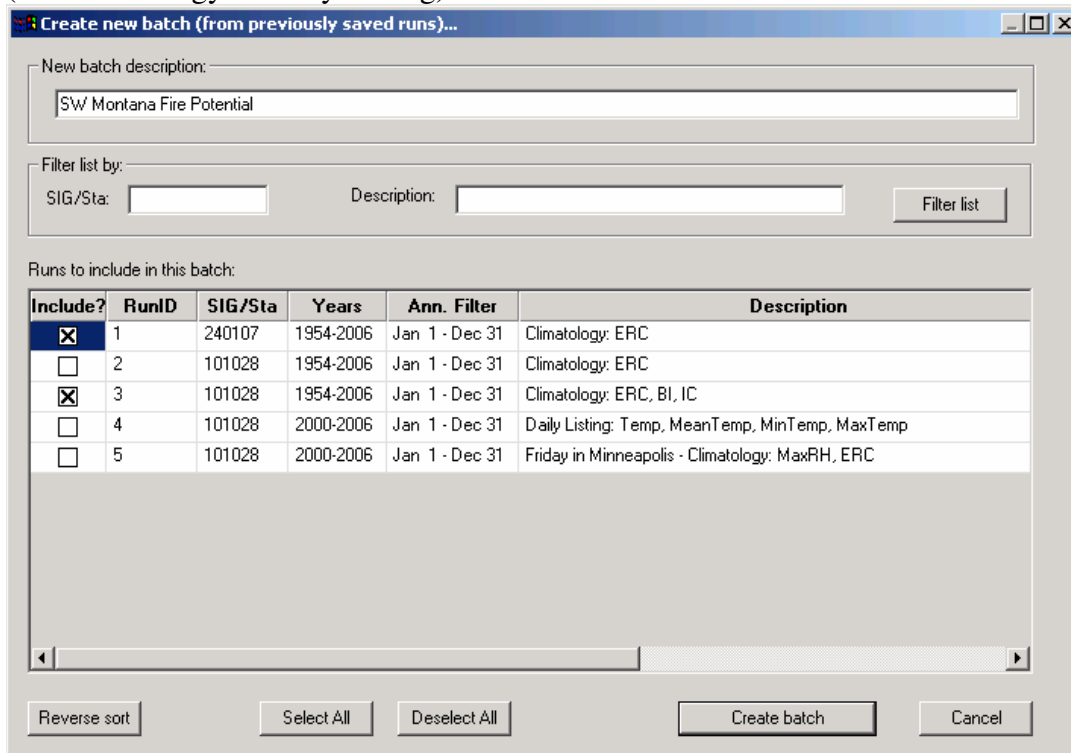


The working set will be established from the settings for the selected Run.

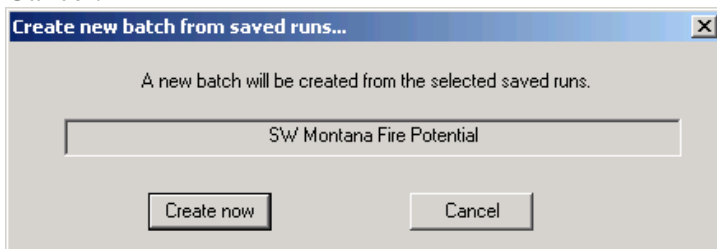
**Building Batches.** In the Batch menu, select Create new batch.



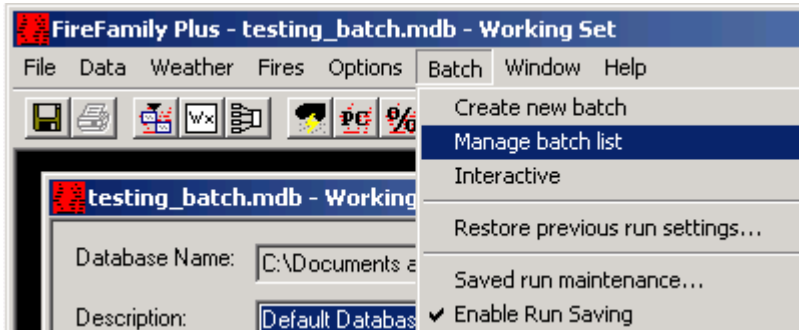
Enter a description to identify the batch (batch name) and check the runID's to include. If you have many save runs you can filter and sort by Sig Name/Station Number or description (i.e. Climatology or Daily Listing) to make it easier to choose.



When you have completed your selection, click on “**Create batch**” and then Create now or Cancel.

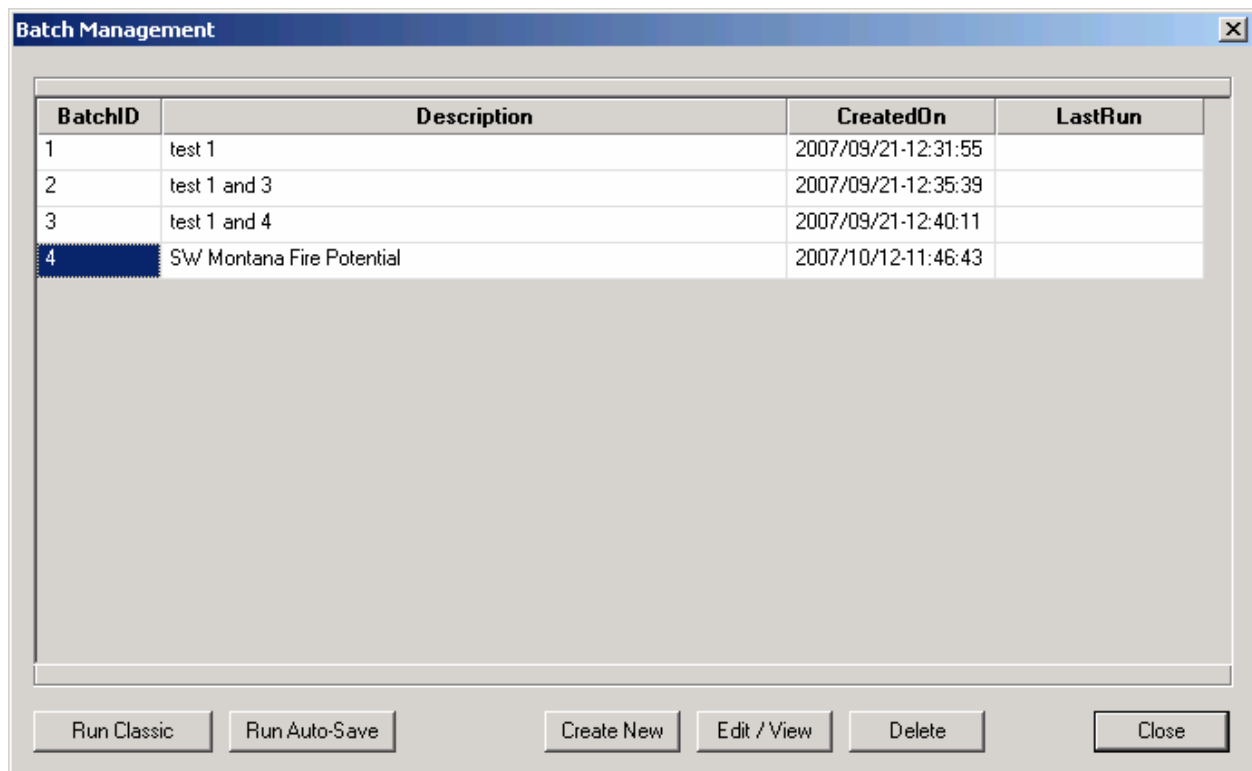


**Maintaining and Running Batches.** In the Batch menu, select Manage batch list and select the batch you want to run or maintain.



Then select the appropriate button:

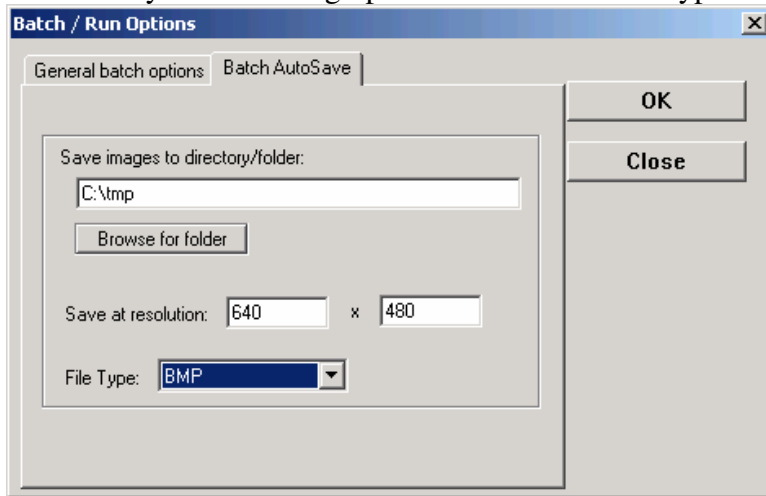
- Run Classic: Runs all the reports in the batch and creates (many many) windows in the FFP application
- Run Auto-Save: Runs all the reports but saves all reports and graphs to a location you define (see Batch Options below).
- Create New: Allows you to create a new batch as described above.
- Edit/View: Allows you to view and edit (add or delete Runs).
- Delete: Delete a batch.



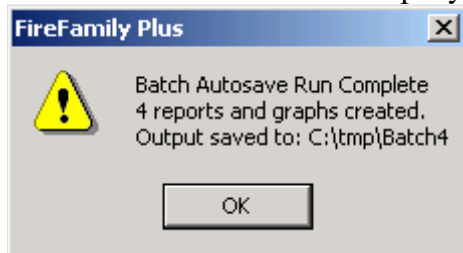
If you select **Run Auto-Save** the files will be saved to a location set by Options->Batch/Run Options.



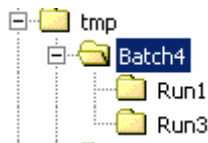
Selecting the Batch Autosave tab allows you to define the folder where output will be stored. It also allow you to set the graphic resolution and file type.



From the select folder a directory tree will be created based on the BatchID and the RunID's in the batch. For the above example you will get a completion window



with files being save in subdirectories Run1 and Run3 since those are the runs in the batch.



**ALL BATCH AUTOSAVE FILES ARE OVERWRITTEN IN SUBSEQUENT EXECUTIONS OF SAME BATCH RUN.**

The “General batch options” tab lets select to override the default “Run” description as runs are saved. If “Prompt” is checked you can edit the run description before every run.

