

Including BehavePlus Results in Word Documents

Following are some tips you can use to effectively include BehavePlus results in reports, such as prescribed fire plans.

➤ **Capture and insert into a Word document.**

The following method works better than using the BehavePlus File > 'Save as an image' feature. The following is available on every computer and doesn't require an additional capture program.

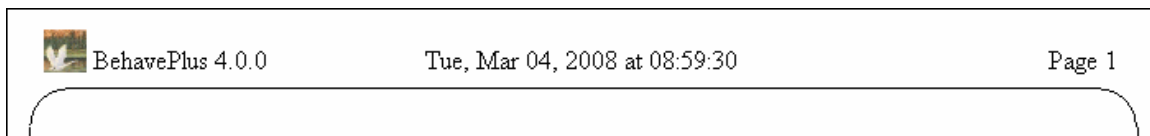
- Alt- Print Screen to capture only the BehavePlus window.
- Ctrl-V (or File > Paste) to insert into a Word document
- Have the Picture Toolbar available. View > Toolbars > Picture
- Click on the inserted BehavePlus window in the Word document.
- Click on the Crop icon.



- Crop the window to leave only the part you want in the report.

➤ **Always include the header on each BehavePlus page.**

It includes the program version number and the date and time of the run. The time stamp helps you match input to output pages if things get confused.



➤ **Always include a listing of the input with the results.**

It makes no sense to include tables of flame length or plots of spotting distance if the information used to get those values isn't provided.

- The text entered on the description line is used in the headings of output pages.

BehavePlus 4.0.0 Tue, Mar 04, 2008 at 09:00:53 Page 1

Inputs: SURFACE

Description → Outside Unit, North end

Fuel/Vegetation, Surface/Understory

Fuel Model → t15

Fuel Moisture

Dead Fuel Moisture % → 3 6 9 12

Live Fuel Moisture % →

Weather

Midflame Wind Speed (upslope) mi/h → 0 2 4 6

Terrain

Slope Steepness % → 0

Run Option Notes

Maximum reliable effective wind speed limit is imposed [SURFACE].

Calculations are only for the direction of maximum spread [SURFACE].

Fireline intensity, flame length, and spread distance are always for the direction of the spread calculations [SURFACE].

Wind is blowing upslope [SURFACE].

BehavePlus 4.0.0 Tue, Mar 04, 2008 at 09:00:53 Page 3

Outside Unit, North end

Surface Rate of Spread (maximum) (ch/h)

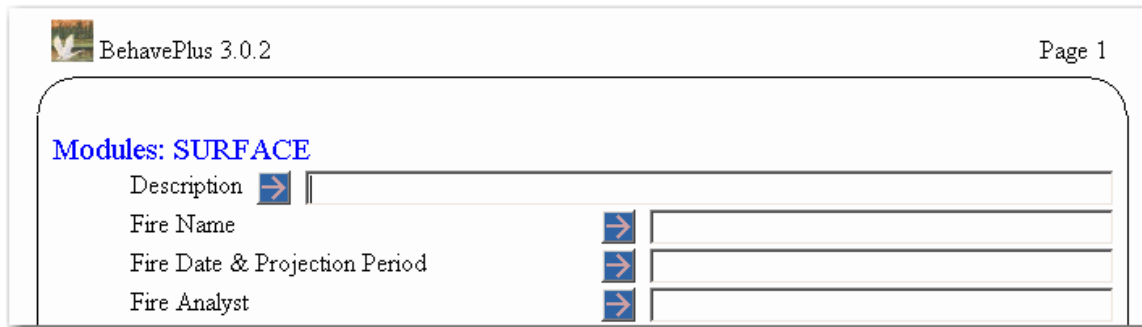
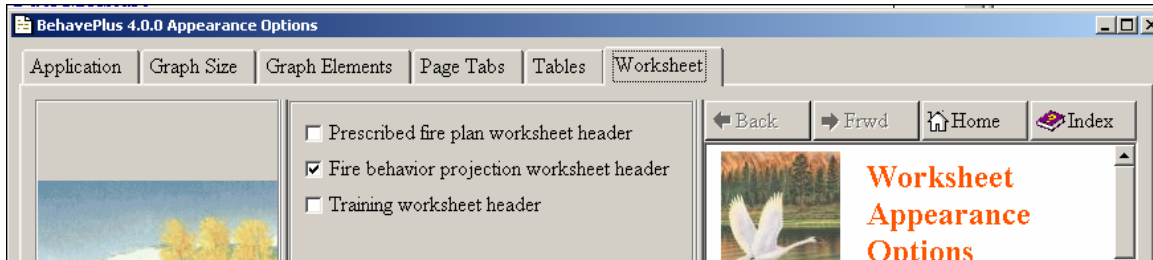
Dead Fuel Moisture %	Midflame Wind Speed (upslope) mi/h			
	0.0	2.0	4.0	6.0
3	0.6	2.1	4.7	7.8
6	0.4	1.6	3.4	5.8
9	0.4	1.3	2.8	4.7
12	0.3	1.1	2.5	4.2

➤ **Add lines to the heading for specific documentation of the Run.**

You can select as many as are appropriate.

- Prescribed fire plan
- Fire behavior projection
- Training

- Configure > Appearance preferences > Worksheet



➤ **The descriptions of discrete variable codes are listed on the last page of the run.**

For completeness it might be worthwhile to include that in a report.
It will help the technical reviewers understand what you did.



- Use the Notes section at the bottom of the worksheet for additional description of the run.

The size of the Notes section can be increased from the default of 4 lines up to 10.

- Configure > Appearance preferences > Worksheet

