

BehavePlus 4.0 *Beta* Release Notice

[1. Introduction](#)

[2. System Requirements](#)

[3. Download](#)

[4. Installation](#)

[4.1 Version 4 Installation](#)

[4.2 Upgrading from Versions 1, 2 or 3](#)

[4.3 Uninstalling](#)

[4.4 BehavePlus Installation Info](#)

[5. Support](#)

[5.1 US Government National Support](#)

[5.2 Training Material](#)

[5.3 User's Guide](#)

[5.4 FAQ's](#)

1. Introduction

The BehavePlus fire modeling system is a PC-based program that is a collection of models that describe fire and the fire environment. It is a flexible system that produces tables, graphs, and diagrams and can be used for a multitude of fire management applications. BehavePlus is the successor to the BEHAVE fire behavior prediction and fuel modeling system (Andrews 1986, Andrews and Chase 1989, Burgan and Rothermel 1984, Andrews and Bradshaw 1990). It is called the BehavePlus fire modeling system to reflect its expanded scope.

The BehavePlus program and supporting material are available on www.firemodels.org.

A description of changes from the old BEHAVE through each version of BehavePlus can be found by clicking [here](#).

2. System Requirements

Operating System	Windows Vista ® Windows 2000 ® Windows NT ® Windows XP ® Windows Me ® Windows 98 ® Windows 95 ®
Memory	128 Mb (64 Mb free)
Storage	50 Mb
Display	Minimum 1024 x 768 pixels, 264K (16-bit) colors

Help	Adobe ® Acrobat Reader is required to view the on-line PDF help files. To get the latest Acrobat Reader, click here .
License	The license requires that a postcard depicting a scene of your local area be sent to: Systems for Environmental Management P.O. Box 8868 Missoula, MT 59801
Data Requirements	BehavePlus does not use data file input. All data are entered directly by the user.

3. Download

All BehavePlus programs and documents are available on the BehavePlus Downloads page. Here you can retrieve:

- the BehavePlus installation program, a self-extracting installation program for Windows ® operating systems, and
- the BehavePlus User's Guide in Adobe ® PDF format.

4. Installation

4.1 Version 4 Installation

You must first download the latest BehavePlus 4.0 installation program from the [BehavePlus Downloads](#) page onto your computer.

If you previously installed a BehavePlus4 Beta version on your computer, you must uninstall it using Add/Remove Programs.

You do not have to uninstall BehavePlus versions 1, 2 or 3 from your computer, as each version is installed in a separate directory.

Once you have downloaded the installation program, execute it by

- clicking Start and Run, browse to locate the program, and press OK, or
- using My Computer or Windows Explorer ® to locate the file and double-clicking on its name or icon to execute it.

When completed, a BehavePlus4 icon should appear on your desktop; click the icon to start BehavePlus Version 4.

Don't forget to send the postcard!

4.2 Upgrading from Versions 1, 2 or 3

BehavePlus Version 1, 2, 3 and 4 may co-exist on the same computer. If you accept the default values during installation of BehavePlus Version 4, it will be installed in a location separate from Versions 1, 2 and 3. A shortcut for all versions may appear on the desktop; the Version 1 shortcut has the default label BehavePlus, Version 2 shortcut has the default label BehavePlus2, Version 3 shortcut has the default label BehavePlus3, and Version 4 shortcut has the default label BehavePlus4.

Version 3 data files, including Run, Worksheet, Fuel Model, Moisture Scenario, and Units Set files, can be read by Version 4. BehavePlus only looks in the directory in which it was installed (e.g., Version 4 will only look in the folders in the BehavePlus4 directory). To use previously developed worksheets, you need to copy the entire folder containing the relevant files from the Version 3 directory to the Version 4 directory using Windows Explorer ®. When you first open a Run or Worksheet from a previous version of BehavePlus, please follow the guidelines in the pop-up window to ensure the Run or Worksheet is fully compatible with the program.

To remove BehavePlus Version 1, 2 or 3:

- click the My Computer icon,
- click the Control Panel icon,
- click the Add/Remove Programs icon, and
- locate the BehavePlus, BehavePlus2, or BehavePlus3 entry in the program list and click Remove (Windows 2000 and later) or Add/Remove (Win9x).

Note: This will only remove the program files; it will not remove Run, Worksheet, Fuel Model, Moisture Scenario, and Units Set files that you have created. These need to be removed separately.

4.3 Uninstalling

The BehavePlus4 installation program uses Wise ® installer to ensure BehavePlus4 is correctly registered with your Windows ® operating system. The only correct way to uninstall BehavePlus is via the Add/Remove Programs dialog:

- click the My Computer icon,
- click the Control Panel icon,
- click the Add/Remove Programs icon, and
- locate the BehavePlus entry in the program list and click Remove (Windows 2000 and later) or Add/Remove (Win9x).

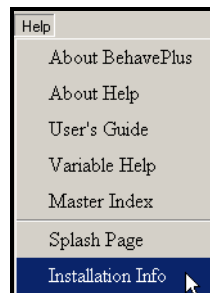
Note: The uninstaller only removes files that were originally created by the installation program. Any files you created or saved using BehavePlus4 are not removed by the uninstaller. If you wish to remove these files, we recommend using Windows Explorer ®.

4.4 BehavePlus Installation Info

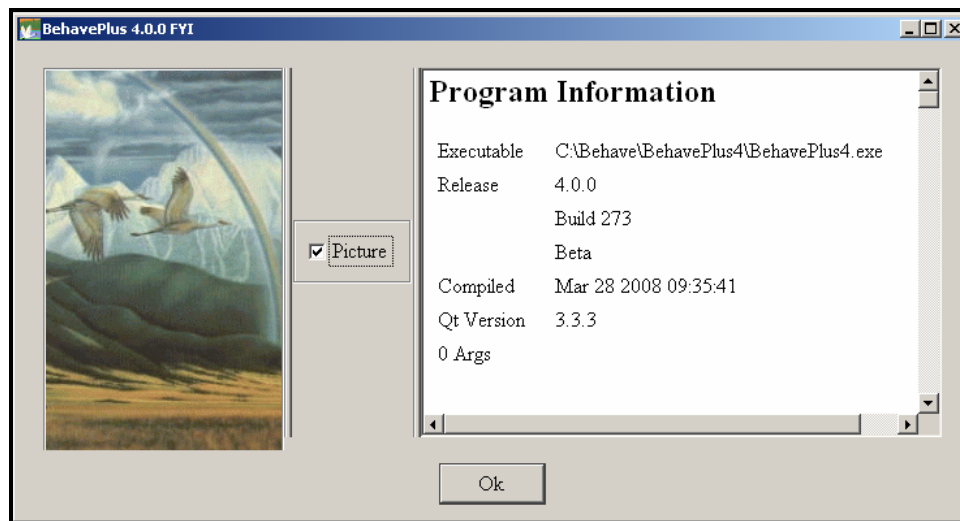
Information specific to the current installation of BehavePlus is included with the program.

4.4.1 Program Information

In the Program Information section, you can view the location of the executable file, the release number, and the date and time it was compiled. This information can help you determine if you have the latest version of the program. In the event that you have several copies of BehavePlus 4.0, you will know which copy you are currently using. The BehavePlus **Program Information** can be accessed by clicking on **Help > Installation Info**.



The **FYI** window that opens contains a wealth of information about the BehavePlus setup.



4.4.2 Environment Variables

The Environment Variables section shows the current environment variable settings of the user's computer. The \$PATH environment variable, in particular, shows the order in which Microsoft Windows searches directories to find applications. This may be useful in determining exactly which BehavePlus executable file is being run, or why one version is being run in preference over another.

5. Support

The following sources of technical support and training are available.

5.1 US Government National Support

To report problems with the Beta test version of BehavePlus, please contact us using the [BehavePlus Beta Test Contact Page](#).

5.2 Training Material

BehavePlus training material has been updated and expanded as part of Joint Fire Science Program (JFSP) project 05-4-1-23. Development continues with support of Forest Service Fire and Aviation Management.

Lessons are organized according to Units:

- Overview Unit — General overview of BehavePlus
- Introduction Unit — Four required lessons that provide the foundation for program operation
- Operation Unit — Optional lessons that cover various aspects of operation
- Modeling Unit — Modeling capabilities, limitations and assumptions, sensitivity
- Application Unit — Specific application examples

There is not a single BehavePlus "course". Lessons can be used singly or in combination to meet specific needs. More information on training materials can be found by visiting the main [Training Page](#).

5.3 User's Guide

The BehavePlus User's Guide covers all aspects of the program operation and is available in Adobe ® PDF format. This document has been completely rewritten for Version 2 and revised for Versions 3. An update for Version 4 is currently under development.

5.4 FAQ's

The [Frequently Asked Questions](#) address various aspects of BehavePlus installation and usage.